



RevoLiX jr.

The table top surgical laser for your office

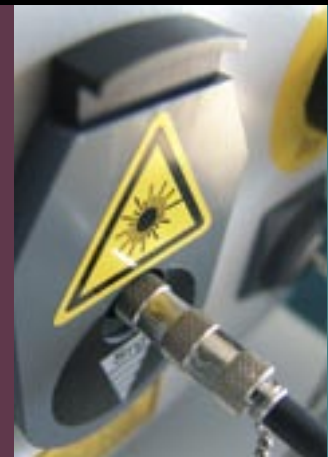


CE
0123

LISALASERPRODUCTSLISALASERPRODUCTSLISALASERPRODUCTSLISALASERPRODUCTS

new Two Micron cw laser

**for Urology, Neurosurgery, ENT,
Gynaecology, Laparoscopy,
Bronchoscopy, Gastroenterology,
General Surgery**



LISALASERPRODUCTS

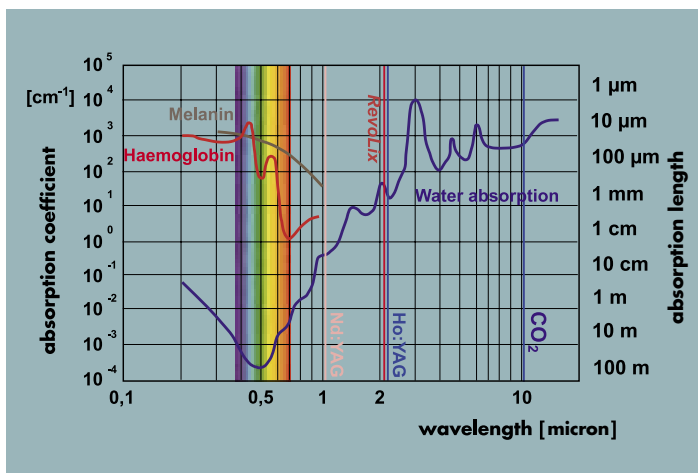
RevoLix

RevoLix - what is new ?

For the first time a surgical laser is available for soft tissue surgery which unifies all advantageous properties of existing laser principles in a single unit:

RevoLix combines the cutting and ablation advantages of the well known CO₂ laser - but there is no need for an articulated mirror arm.

RevoLix laser radiation achieves excellent haemostasis like the Nd:YAG laser - but there is no risk of deep tissue penetration.



RevoLix tissue effect is shallow like the Holmium laser – however there is no trauma. Cutting edges are smooth and clean. In open surgery there is no splattering.

RevoLix laser radiation is delivered to the surgical site through flexible fibres - ideal for endoscopic, laparoscopic and minimally invasive surgery.

Two Micron

RevoLix - why Two Micron ?

The *RevoLix* wavelength at 2.0 micron is almost identical to the well established Holmium laser. This wavelength is known for its suitability for resection and ablation, safe application in an aqueous medium and it generates excellent haemostasis. These excellent properties are due to the efficient absorption of Two Micron laser radiation by water which is ubiquitous in any tissue. At the *RevoLix* wavelength of 2.0 micron the absorption is 2.5 times stronger than at the Holmium wavelength providing even more precise cutting in soft tissue surgery.

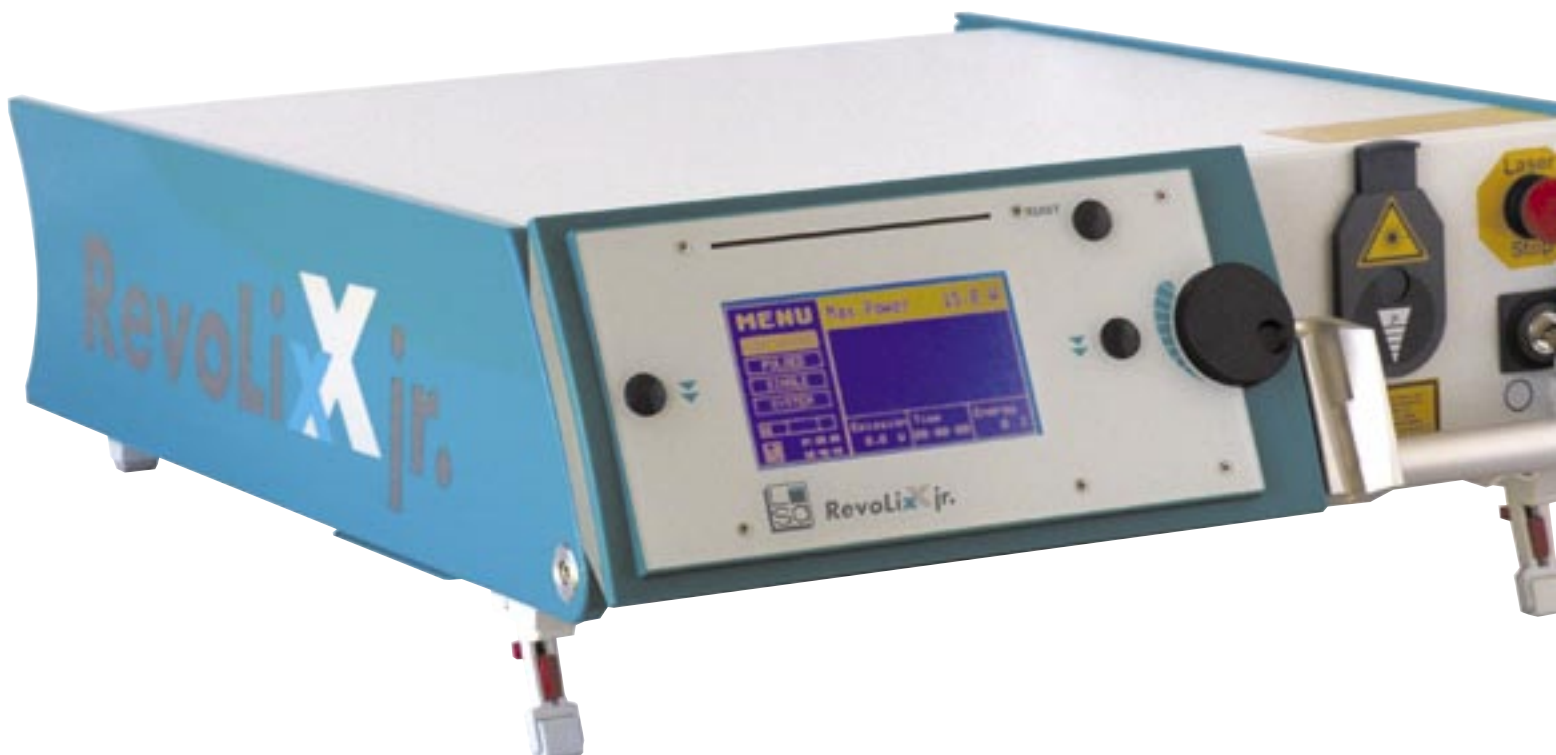
RevoLix - why Two Micron cw laser ?

In soft tissue surgery efficient and even cutting combined with strong haemostasis is required. This is provided by the *RevoLix* laser in an unmatched manner. The new *RevoLix* laser operates in a continuous wave mode and cuts and vaporizes circled and white tissue without deep penetration or uncontrolled necrosis. Clean cuts and excellent haemostasis are achieved by moving the beam across the surgical site. Generous Two Micron laser power capacity allows high vaporization and resection rates at no bleeding and short theatre time.

advantages

What are the advantages of the new laser ?

Cutting efficiency of soft tissue and haemostasis is superior to any known alternative. Tissue damage is restricted to less than 1 millimetre beneath the cut. *RevoLix* preserves excellent vision to the surgical site. There is no vision impairment due to bleeding, excessive bubble formation, tissue fragments or ruptured tissue. Unlike KTP the surgical situs is free of any visible laser glare. The colour neutral laser safety eyewear does not generate discolouration like KTP. Endoscope lenses remain free from splatter when used in open surgery or in laparoscopy.



RevoLix - why is it safe ?



In an aqueous medium the laser effect to tissue is restricted to less than 2 millimetres in front of the tip of the fibre. Any tissue further afield is shielded off by the medium. The same mechanism is protecting tissue and organs adjacent to the cut. Any tissue more distant than 2 millimeters beneath the cut is unaffected by the *RevoLix* laser. Opposed to KTP this property eliminates the risk of unintentional tissue damage during laser surgery.

What are the applications ?

The *RevoLix* laser system has demonstrated its superior performance in surgical disciplines such as urology, neurosurgery, bronchoscopy, ENT, gynaecology and laparoscopy.

RevoLix - delivery systems

LISA offers a wide range of specialised delivery systems. Please refer to the *LISA Medical Laser Accessories* brochure for applicators like front firing surgical fibres, applicators like *AutoFlex* for laser ureterotomy or *LapLas* for laparoscopic laser surgery.

Most fibres are reusable after being stripped and cleaved. All fibres match with the surgical instrumentation recommended and approved by LISA laser products.

How does RevoLix match with your theatre ?

The new laser is extremely theatre friendly. *RevoLix* does not cause noise strain to theatre personnel. The table top laser fits into any video tower. A laser trolley is available on option. Regular theatre utilities are sufficient (standard power outlet 100 - 240 VAC wide range, no cooling water required). The laser has proven its extreme sturdiness during routine transportation between theatres and other departments.

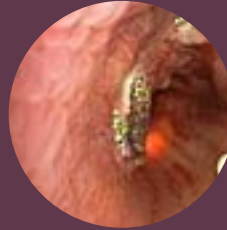
RevoLix - operation of the laser

The new laser is easy and safe to operate. The display is easy to understand. Operational modes such as continuous or chopped are selected by push buttons. The power setting is adjusted with a large adjustment wheel. Large characters display the settings on the easy to read display.

RevoLix - join us on the crest of the continuing Two Micron wave.

Pneumology

- Bronchoscopy
- Airway recanalization
- Desobstruction
- Tissue coagulation



Airway recanalization



Laryngeal tumor



Excision of tumor

Urology

- Bladder neck incision
- Opening of strictures
- Vaporization and excision of bladder tumors

Neurosurgery

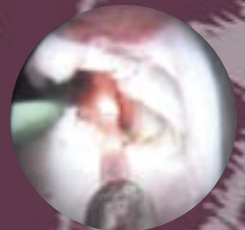
- Fenestration of cysts
- Cystoventriculostomy
- Ventriculocystostomy
- Catheter recovery
- 3rd ventriculostomy
- Tumor resection
- Haemostasis



Ventriculostomy

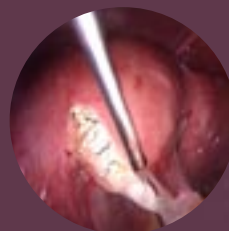
ENT

- Excision of tumors
- Excision of granulomas
- Tonsillectomy



Bladder neck incision

Laparoscopy



Adhesiolysis

Haemorrhoids

Gynaecology

- Excision of polyps
- Excision of scars
- Vaporization of tissue
- Adhesiolysis

Technical Specifications *RevoLix jr.*

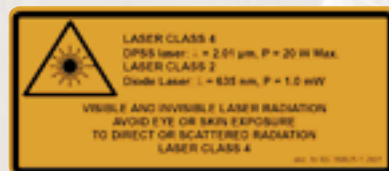
Laser system	continuous wave DPSS laser
Wavelength	2.0 micron
Power to tissue	1 - 15 Watt cw
Chopped mode	50 msec to cw ON-time
Repetition rate	0.5 to 10 Hz
Beam delivery	wide range of fibers
Aiming beam	635 nm, > 1 mW, adjustable
Utilities	100 - 240 VAC 50/60 Hz, 6 A max.
Cooling	air
Ambient Temp.	up to 30° C
Dimensions	H 58 x W 48 x L 15 cm / 23" x 19" x 6"
Weight	20 kg



Laser Trolley

Optional laser trolley for RevoLix including drawer and power points

101 510 001



LISALASERPRODUCTSLISALASERPRODUCTSLISALASERPRODUCTSLISALASERPRODUCTS

Safety Standards: IEC 60601
CE acc. Council Directive 93/42/EEC

U.S. federal law restricts this device to sale by
or on the order of a physician.

Specifications are subject to change without notice.
Made in Germany 2006-05 V04



LISA laser products OHG
Max - Planck - Str. 1
D - 37191 Katlenburg-Lindau
Germany
fon: +49 (0)5556-9938-0
fax: +49 (0)5556-9938-10
e-mail: info@lisalaser.com
web: www.lisalaser.com

